



Needlepointers.com

Slouchy Witch Hat Pattern

Side Hat

Cut 2 Patchwork

Cut 2 Lining

Cut 2 Batting

Print at 100% or Actual Size

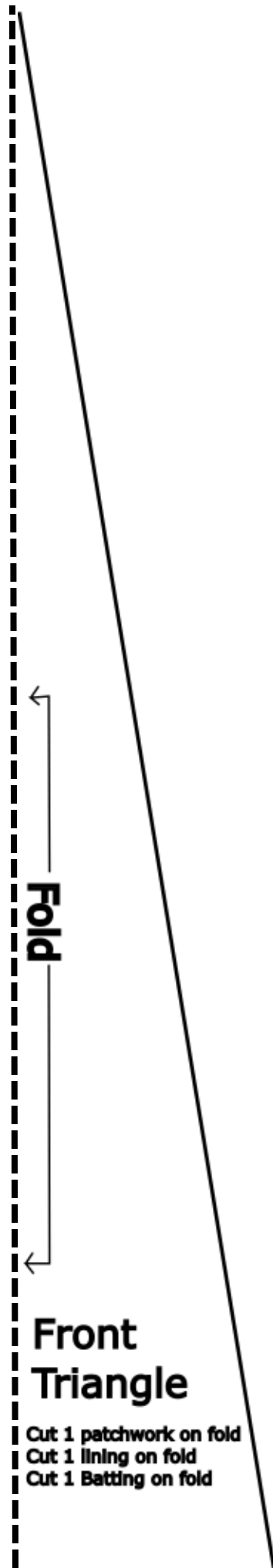
For the Tutorial visit:

<https://www.needlepointers.com/main/youtubecontent.aspx?youtubeid=823>

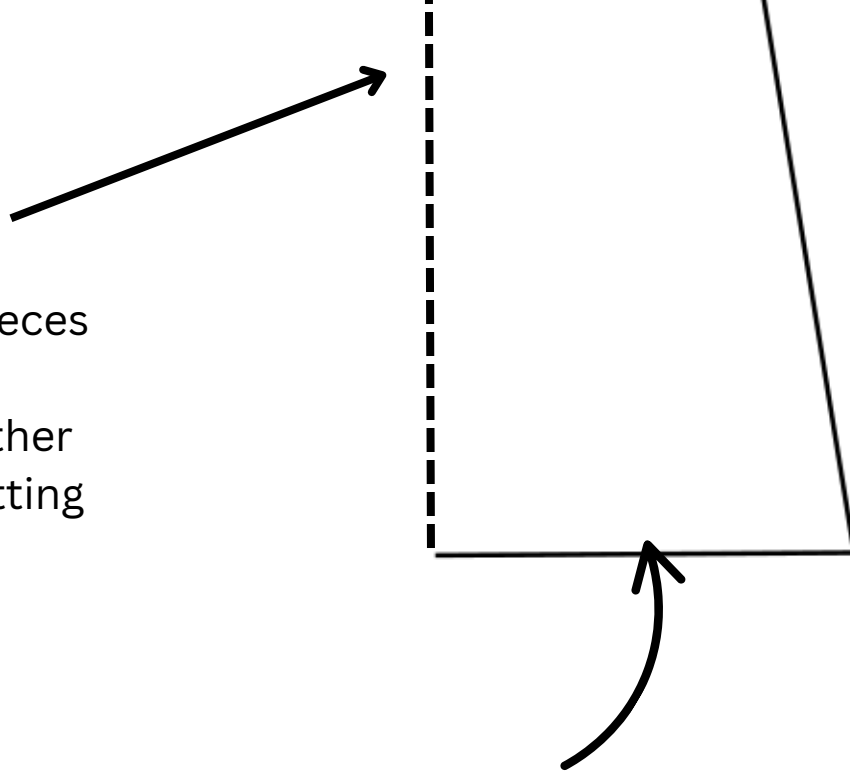
Extend Lines to edge of paper

Needlepointers.com
Slouchy Witch Hat Pattern

Print at 100% or Actual Size



Overlap
printed
pattern pieces
1/4" and
tape together
before cutting
fabric



Adjust Hat Size: Change the width of triangle base as described in instructions to adjust hat size.

Needlepointers.com
Slouchy Witch Hat Pattern

Print at 100% or Actual Size

Needlepointers.com
Slouchy Witch Hat Pattern

Print at 100% or Actual Size

